

HSP

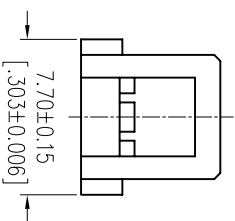
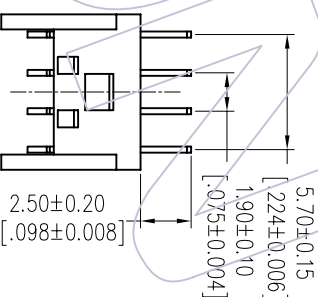
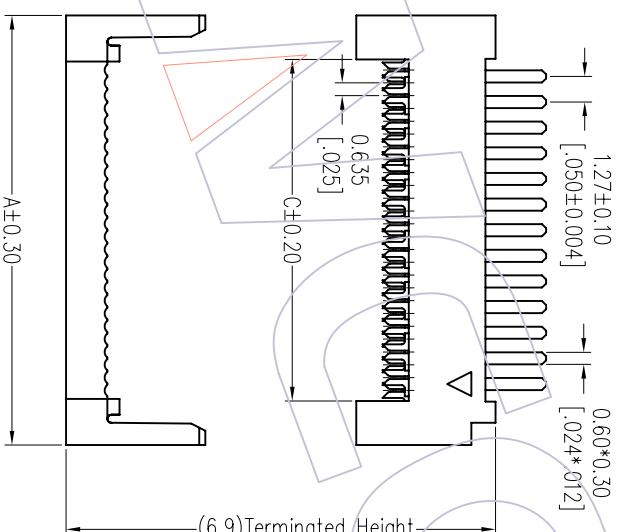
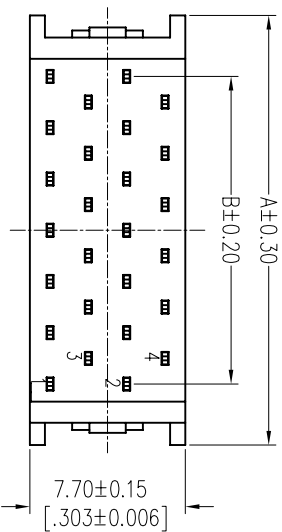
NOTES:

Rated Current: 1.0AMP
 Contact Resistance: 30mΩ max
 Withstand Voltage: 500V AC/DC
 Insulation Resistance: 1000MΩ min
 Operation Temperature: -40°C to +105°C
 Contact Material: Phosphor Bronze
 Contact Plating: Sn Over Ni
 Insulator Material: LCP+30%G.F UL94V-0
 Cover Material: PBT+15%G.F UL94V-0

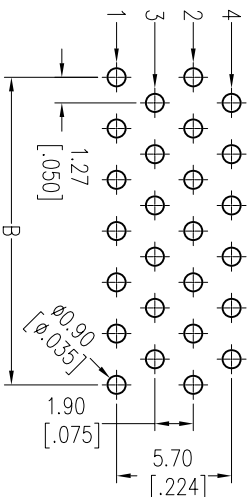
Ordering Information

5341 - XX P XX X 01

No. of Pins
 Contact Plating
 SW=Matte Tin
 Color Insulator
 B=Black
 G=Grey(427C)



Recommended P.C.B Layout (Top Side)
 (PCB BOARD TOLERANCE±0.05)



No. of Pins	A	B	C
10	11.13	5.08	6.76
20	17.48	11.43	13.11
26	21.29	15.24	16.92
30	23.83	17.78	19.46
40	30.18	24.13	25.81
50	36.53	30.48	32.16
60	42.88	36.83	38.51
68	47.96	41.91	43.59
70	49.23	43.18	44.86
72	50.50	44.45	46.13
80	55.58	49.53	51.21
90	61.93	55.88	57.56
100	68.28	62.23	63.91

OPERATION	XX	±0.40	DRAW	JYHuang	DATE	2012/10/09	SCALE	FIT	PART NO.	5341-XXPXXX01
CHECK	XXX	±0.25	CHECK		DATE		UNIT	mm	TITLE:	1.27mm DIP PLUG FOUR ROW FOOT
ANGLE	XXX	±0.15	APPROVE		DATE		SIZE	A4	"J"-TYPE	
REV	DATE	MODIFICATION DESCRIPTION	CHANGE	DIM	ANGLE	TOL	SHEET	1/1	CUSTOMER NO.	

WCON

WCON-Dongguan
 Tel: +86 769 85358920
 Fax: +86 769 85358915
 E-mail: sales@wcon.com

WCON-Kunshan
 Tel: +86 512 57468408
 Fax: +86 512 57468468
 E-mail: sales@wcon.com